



# From Gallery to Cloud: Arta's Infrastructure Evolution with AWS and Kubernetes EKS

Leveraging AWS with Binbash for Seamless Art Logistics

## Executive Summary

Arta, a global leader in fine art logistics, faced the challenge of digitizing their operations to meet the demands of a growing clientele. Binbash, an AWS Partner, stepped in to provide a comprehensive AWS-based solution, streamlining Arta's operations and enhancing customer experience.

## Challenge

Arta's operations were vast and complex, with a need for real-time tracking, secure data storage, and efficient communication channels. The challenge was to digitize these operations without disrupting the existing workflow and ensuring top-notch security for sensitive art-related data.

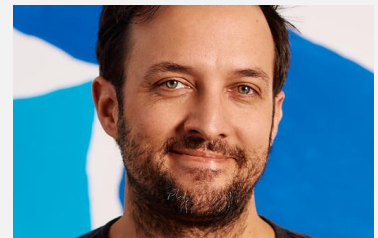
## Solution

binbash, with its deep expertise in **AWS**, designed a tailored solution for **Arta**. Utilizing AWS's robust services, **binbash** implemented a system that allows real-time tracking of art shipments, secure cloud storage for client data, and efficient communication channels for internal and external stakeholders. Arta's decision to collaborate with Binbash was driven by their proven track record and their ability to provide innovative solutions that stood out from other partners.

# Arta

## Background

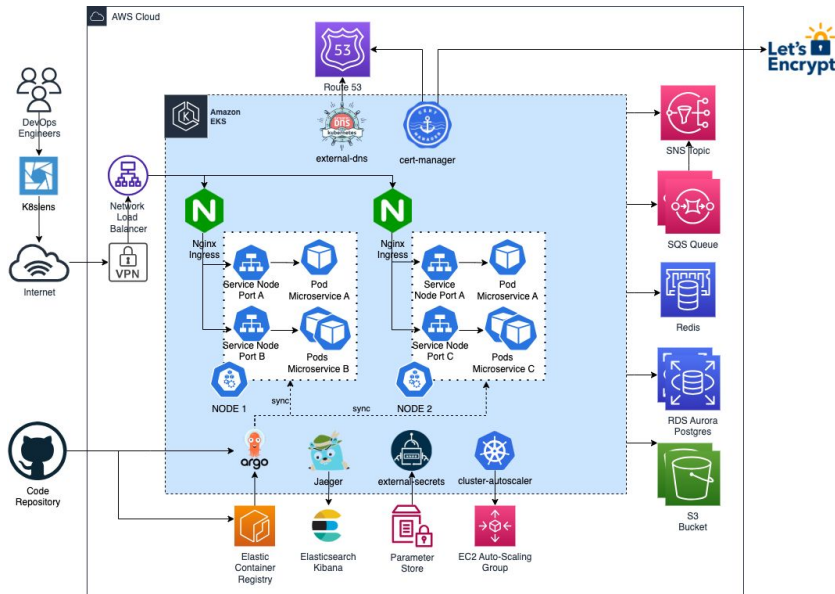
Arta has been a trusted name in the art logistics industry, providing end-to-end solutions for art collectors, galleries, and institutions. As the art world evolved, so did the demands of Arta's clientele, necessitating a digital transformation.



"We were fortunate to work with binbash to re-architect and migrate our AWS infrastructure and Kubernetes clusters. We've leaned on them for guidance of well-architected framework best practices and deep knowledge of DevOps tooling. They've done great work around knowledge transfer while also being exceedingly friendly partners! At Arta, we've been impressed with the binbash commitment to clarity, excellence, integrity and recommend them more enthusiastically."  
**Dylan Fareed, CTO**



## Cloud Solutions Architecture Diagram



## Results

Post-implementation, **Arta** witnessed:

- A significant reduction in operational delays.
- Enhanced security for sensitive data.
- Improved customer satisfaction due to real-time updates and efficient communication.
- Scalability to accommodate the growing demands of the business.

The digital transformation has positioned Arta as a pioneer in the art logistics industry, with plans for further technological advancements in collaboration with **binbash**.

## Key Milestones

- **AWS K8s EKS Modernization & Migration:** binbash orchestrated the migration to a Kubernetes (K8s) EKS environment, ensuring a robust and scalable platform tailored to Arta's unique operational needs completely as Terraform code.
- **AWS EKS QA and Prod Clusters Observability:** binbash implemented metrics, logs and tracing observability with OpenSearch, Prometheus + Grafana and Jaeger for Arta's. Ensuring real-time insights and proactive issue resolution.
- **Continuous Improvement & Optimization Phase:** binbash offered AWS solutions and recommendations throughout Artas' cloud journey. This included planning, migration, and automation, positioning them to fully harness the benefits of the cloud.

Together, Arta and binbash have set the gold standard in leveraging **AWS** for seamless global shipping solutions, catering to auction houses, marketplaces, galleries, and beyond.